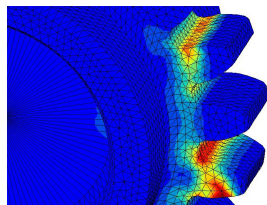
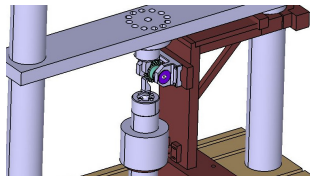


Design and development of a single gear-tooth bending fatigue test

Post-Master (MS) student : **Omar Hrouchi** (2015–2016/09/15)

Supervisors : A. Köster, V. Maurel ; S. Thibault (Safran Tech)

Industrial partner : Safran Tech



- Loading at the highest point of single tooth contact (HPSTC)
- Monotonic and HCF crack initiation at tooth base
- Determination of bending fatigue of gear teeth
- A FEA model for crack initiation and propagation (Zcracks software)