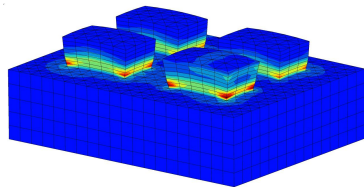
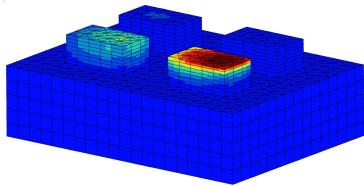


# Numerical study of the Selective Laser Melting process

Post-Master (MS) student : **Charlotte Metton** (2015–2016/09/15)

Supervisors : M. Mazière, D. Missoum-Benziane ; G. Marion, B. Macquaire  
(Safran Tech)

Industrial partner : Safran Tech



- Layer-by-layer thermomechanical simulation of the powder deposition (FE code Zebulon/Z-Set)
- Validation on previously tested TA6V specimens
- Estimation of the residual stress field in several specimen shapes
- Process optimization