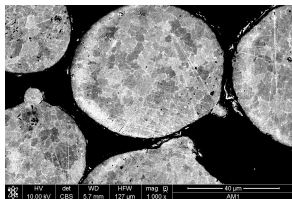


High pressure single crystal turbine blade tip repair using laser metal deposition (LMD)

Post-Master (MS) student : **Romain Allusse** (2015–2016/09/15)

Supervisors : C. Colin, T. Gelpi ; H. Molet (SNECMA)

Industrial partner : SNECMA (Safran group)



- Experimental study of LMD process parameters on resulting microstructure
- Heterogeneities due to directionnal solidification and dendrite formation
- Optimization against porosity and hot cracking
- Application to AM1 Ni-based turbine blades